



Highlights

Oxford to Bicester Town

- Oxford Parkway station now weatherproof
- Tracks laid
- Bridges constructed

Bicester Town to Bletchley, Claydon Junction to Princes Risborough

- Initial consultation on crossings complete
- Ground investigation work underway
- Survey work continues

Bletchley to Bedford

- Crossings and Rights of Way consultation planned



Site Compounds Established

A temporary site compound was set up in a farmer's field at Verney Junction in December 2014 and will be operational for around 40 weeks.



Further compounds have been established at Steeple Claydon and Swanbourne station and will be operational until early April 2015. The Verney Junction compound has offices and will serve as a storage site for large machinery and vehicle parking whilst work is being carried out on the mothballed section of track.

Keep in Touch

To keep up to date with news and progress on East West Rail, subscribe for email bulletins at www.eastwestrail.org.uk, follow us on Twitter @eastwestrail or the East West Rail Consortium page on LinkedIn.

We are keen to spread the word about East West Rail and keep people informed of progress. We regularly give talks to business, special interest and community groups.

Please contact Caryl Jones, Communications Manager for the East West Rail Consortium for further information:

Phone: **07785 927210**

Email: caryl.jones@bedford.gov.uk

Ground Investigation and Surveys

Ground investigation surveys are taking place between Bletchley and Steeple Claydon. This involves some vegetation clearance along the mothballed railway, installing temporary drainage at locations prone to flooding and drilling boreholes for geotechnical surveys and water table investigations.

Vegetation management, general maintenance and upkeep of the railway corridor will be ongoing from February 2015 until spring. Ecologists are on site to ensure this work does not affect protected species.

The work on the mothballed section of the railway is due to be complete by April and will then extend to the operational railway from Claydon to Aylesbury and Princes Risborough.



^ This cable percussive rig is being used to drill boreholes for geotechnical and water table surveys. Boreholes are typically 10 to 30 metres deep.



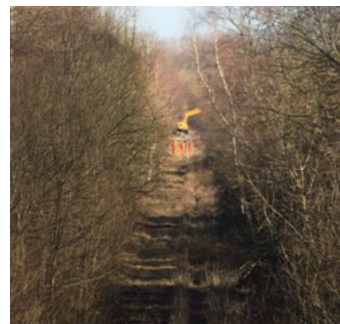
^ Temporary drainage will be installed and the water table level monitored over different seasons.



^ Ecologists are on site to ensure work does not disrupt the habitat of protected species. There are many badger setts along the route.



^ Vegetation clearance



^ Borehole drilling

Parsons Brinckerhoff is the principal contractor for this work with BAM Richies undertaking the drilling work for the geotechnical surveys. Murphy's are undertaking the vegetation clearance work with Thompson Habitats providing ecological work.

Crossing the Railway Safely

Please stay safe and only cross the railway line at authorised crossing points. Heavy plant is active for borehole drilling work and vegetation clearance. To make the railway as safe an environment as possible for everybody, Network Rail will be monitoring use.

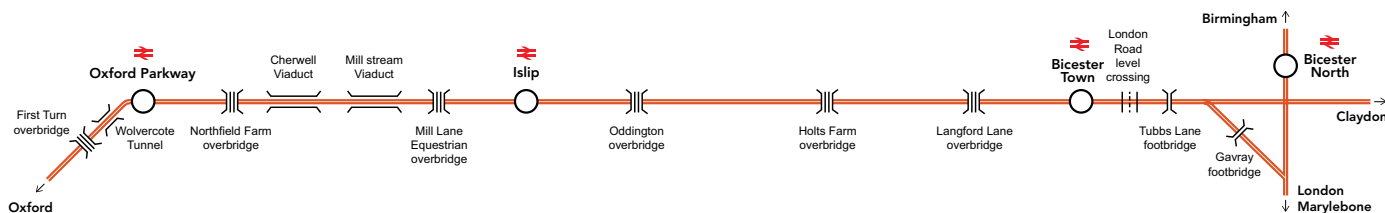


Oxford to Bicester Town (Phase 1)

Construction work is on schedule for services to start operating between the new Oxford Parkway station and London Marylebone via Bicester Town in September 2015, and from Oxford in Spring 2016.

It involves construction of a chord at Bicester to connect to the Chiltern Mainline, upgraded track and signalling and station improvements at Islip and Bicester Town.

In addition to the work required for the new Chiltern Railways fast passenger service between Oxford and London via Bicester Town, the scheme will provide the railway infrastructure for future East West Rail services between Oxford, Milton Keynes and Bedford. Work to electrify the line between Oxford and Bicester Town is scheduled to coincide with the reconstruction and electrification of the line from Bicester to Bletchley, for completion by March 2019.



^ Oxford Parkway Station



^ Bicester Town station front wall



^ Bicester chord bottom ballast and track installed



^ Tracks laid at Banbury sidings

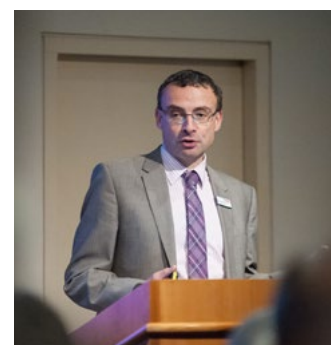
For more details of work in progress and timelapse videos of the stations and the chord under construction, please visit www.bicestertooxfordcollaboration.com.

Heading Eastwards...

A study commissioned by the East West Rail Consortium published in 2014 shows there is significant potential benefit of extending the Western Section of East West Rail for services through to East Anglia.

Network Rail is considering how improved rail services in the East of England may best be delivered using existing, enhanced and new railway infrastructure. This work aims to identify a single preferred route for the Central Section, or 'missing link' of East West Rail between Bedford and Cambridge by the end of 2016, for inclusion in Network Rail's Long Term Planning Process.

A video presentation is available on www.EastWestRail.org.uk explaining the work being undertaken by Network Rail, supported by the East West Rail Consortium.



Public consultation meetings on East West Rail crossings

A series of public consultation and information events has been held throughout Buckinghamshire and Oxfordshire over the last 12 months, to identify how the railway crossings and rights of way can be made safe before East West Rail train services start to operate.

This follows discussions with land owners and residents and other key stakeholders. The public events have been well attended and local residents' views are helping to develop solutions and to identify the most appropriate alternative ways of crossing the railway. Crossings include public footpaths, bridleways, farmers' crossings as well as level crossings on the public highways. Some crossings present a challenge and further studies are being undertaken before further consultation can take place.

The next phase of public meetings and consultation will cover the 33 crossings between Bedford and Bletchley. No decisions have been made regarding these crossings, so this is an ideal time for local residents and communities to understand initial proposals and have input into how these proposals are developed further.

The following dates may be subject to change. Details of times and venues will be publicised nearer the time on www.networkrail.co.uk/east-west-rail, www.eastwestrail.org.uk and via local councils, local media and advertised locally. If you have any queries about these crossings meetings, please contact the team by email to EWRPublicInformation@networkrail.co.uk



Public consultation meetings on East West Rail crossings – Bletchley to Bedford

| Date | Location | Railway Crossings |
|------------------------------------------|-------------------------------|--------------------------------------------------------------------------------------------------------------------------------------------------------------------------------------------------------------------------------------------------------------------------------------------------------------------------------------------------------------------------|
| Wednesday 8th April 2015 4pm to 8pm | Aspley Guise Village Hall | <ul style="list-style-type: none"> • Mill Farm footpath • Sewage Farm footpath • Aspley Guise MCB • Old Manor Farm footpath • Berry Lane private user worked-crossing • Long Leys private crossing |
| Friday 1st May 2015 4pm to 8pm | Aspley Guise Village Hall | <ul style="list-style-type: none"> • Husborne Crawley FP6 footpath • Matey Boys private crossing • Husborne Crawley Footpath 10 • Ridgmont public highway level crossing • Broughton End footpath • Forty Steps footpath • Playing Field footpath |
| Thursday 14th May 2015 4pm to 8pm | Stewartby Village Hall | <ul style="list-style-type: none"> • Green Lane public highway level crossing • Stewartby Brickworks private vehicle crossing on public footpath route • Wootton Broadmead public highway level crossing • Wootton Village footpath • Kempston Hardwick public highway level crossing • Woburn Road footpath |
| Thursday 4th June 2015 4pm to 8pm | Lidlington Village Hall | <ul style="list-style-type: none"> • School Crossing Lidlington footpath • Lidlington public highway level crossing • Pilling Farm South (Timberland Trail) footpath • Marston public highway level crossing • Millbrook public highway level crossing • Millennium Park footpath |
| Thursday 25th June 2015 6.30pm to 9pm | Bow Brickhill Village Hall | <ul style="list-style-type: none"> • Fenny Stratford public highway level crossing • Bow Brickhill public highway level crossing • Browns Wood footpath • Pony Crossing bridleway • Woburn Sands public highway level crossing (also on 26th June) |
| Friday 26th June 2015 4pm to 8pm | Woburn Sands Summerlin Centre | <ul style="list-style-type: none"> • Woodleys Farm Private user-worked crossing • Fisherman's Path footpath • Woburn Sands public highway level crossing (also on 25th June) • School Crossing Woburn Sands footpath |

This series of meetings is a forerunner to formal consultation required as part of the statutory process to obtain any necessary authorisation for the railway through a Transport and Works Act order.

Please check www.eastwestrail.org.uk in case any details above change.